

BE SPOT-ON



UK Government

AWARE

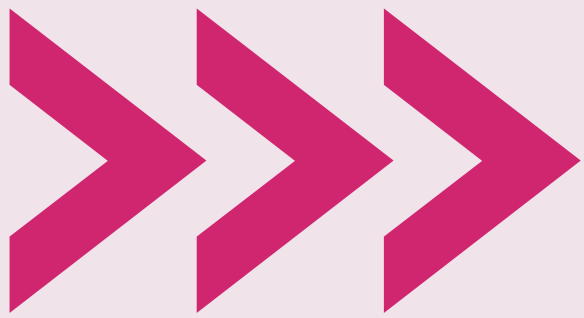


Flea and tick spot-ons are an important way to protect your pet's health but how you use them really matters



The way these medicines are applied can affect how well they work and whether they end up in our waterways and wider environment





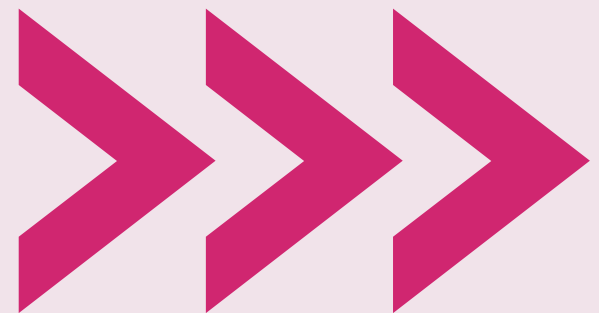
PLAN

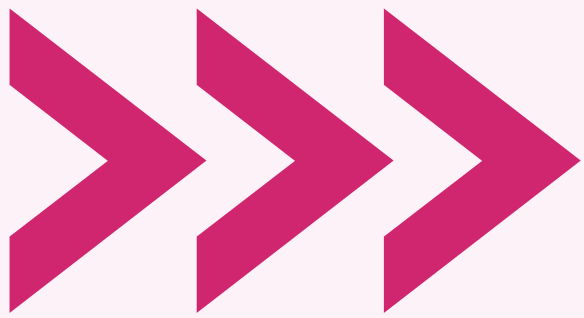


Pick a time when you won't be in close contact with your pet, for example at night or before you go to work.



If you need to wash your pet then do it in the days before applying the medicine, rather than afterwards.





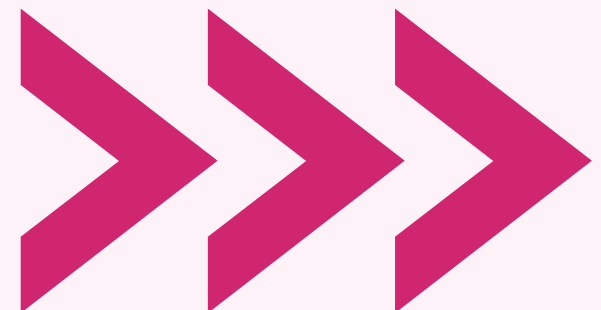
APPLY

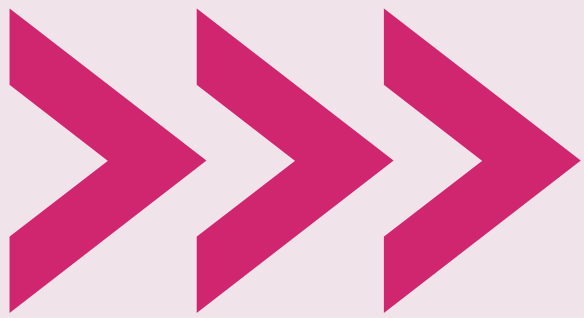


Read instructions or visit VMD Product Information Database to apply it right



Part your pet's fur at application site(s) until you can see the skin, apply directly to the skin not the fur





PROTECT



Keep your hands away from the application site until its dry



Do not let your pet swim for at least 4 days after application



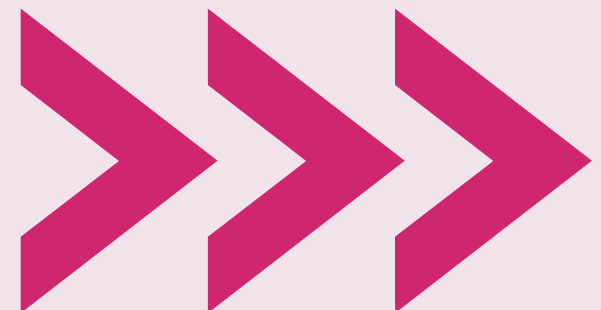
Limit swimming and washing your pet in the weeks following application



Bin used pipettes- don't rinse them down the sink or recycle



Put treated fur in the bin, don't leave out for birds





UK Government

**VISIT OUR
WEBSITE TO
FIND OUT
MORE**



bespotonaware.campaign.gov.uk